



RAILS @ ROSEHILL

Australasian Region National Convention 2023
National Model Railroad Association

29 September - 2 October 2023

6029 is part of the collection managed by Transport Heritage NSW

Newsletter #2 | February 2023

rails@rosehill.org.au

On Track to Rosehill

Welcome to our second Rails@Rosehill Newsletter!



In the NMRA Australasian Region, we have over 800 members from Australia, New Zealand and selected Pacific Islands.

Did you know that almost 50% of our members model Australian or New Zealand prototypes? The remainder of the members model USA, Canada, UK and European prototypes.

This is testament to the fact that the NMRA Australasian Region is an organisation covering a number of diverse interest areas from within Australasia as well as overseas.

In this Newsletter we have a focus on the Contest aspect of our program. I encourage you to read the information and consider an entry.

At the time of writing, we have 15 members offering to run clinics. An excellent start! There are approximately 25 clinic spots still available on the program and I ask you to consider offering to run a clinic. On the following page we list some clinic topic 'starters' to which you might relate and be become inspired! Please let us know if one of these, or another topic, is of interest to you to present.

Your program team is finalising arrangements with two guest speakers to attend and present clinics at **Rails@Rosehill**. These two speakers have a high profile in the hobby within our Region. More details shortly!

The venue for **Rails@Rosehill** is well situated from a transport perspective, and the facilities at Rydges Parramatta are excellent. Over on page two you will find accommodation information for Rydges Parramatta and a link to make your booking, which you can do now. You will also see other near by accommodation options if Rydges Parramatta is not your preferred option. In our March Newsletter we expect to bring you details on how to register for **Rails@Rosehill**.

Introducing the Team Leaders committed to bringing you **Rails@Rosehill**:

- ⇒ **Program:** Randall Jones rails@rosehill.org.au
- ⇒ **Contest:** Gerry Hopkins contest@rosehill.org.au
- ⇒ **Layout Tours:** Graeme Barnes layouttours@rosehill.org.au
- ⇒ **Prototype Tours:** Peter McGuire prototype@rosehill.org.au
- ⇒ **Partners Program:** TBC partners@rosehill.org.au
- ⇒ **Registrations:** Allan Garbutt registrations@rosehill.org.au
- ⇒ **Shop:** Lindsay Lucas shop@rosehill.org.au
- ⇒ **Accounts:** Alan Puttock accounts@rosehill.org.au
- ⇒ **Host:** John Arrowsmith host@rosehill.org.au

Contacting the right person will help you get a response more efficiently, and from the right person! I am delighted by the way the Team is working together to bring you an exceptional experience during our Convention.

If you have any questions about the information in this Newsletter, please email rails@rosehill.org.au and let's discuss it!

Yours sincerely

John Arrowsmith

Convention Host

Email: host@rosehill.org.au

Div 7 Super



Key Information

** Save the Date*

Dates: **29 September—2 October**

The Venue: **Rydges Parramatta**

116-118 James Ruse Drive

Rosehill NSW 2412

Main Program:

Friday: Layout Tours, Welcome Event

Saturday: Clinic Program

Sunday: Clinic Program

Monday: Layout Tours

Clinic Program: **Topics and clinic formats to support modellers new to a specific topic through to emerging topics and techniques**

Consult with an MMR: **One-on-One chat with an experienced hand on Saturday**

Convention Dinner: **Saturday evening, at Rydges**

Bring Your Grandkids! **Sunday morning...**

Partners Program: **Two day program**

Layout Tours: **Tour program covers south of Sydney, general Sydney area, and north of Sydney**

Accommodation: **Available at Rydges, and other venues nearby**

Contact Us:

- ⇒ **Program:** rails@rosehill.org.au
- ⇒ **Contest:** contest@rosehill.org.au
- ⇒ **Layout Tours:** layouttours@rosehill.org.au
- ⇒ **Prototype Tours:** prototype@rosehill.org.au
- ⇒ **Partners Program:** partners@rosehill.org.au
- ⇒ **Registrations:** registrations@rosehill.org.au
- ⇒ **Shop:** shop@rosehill.org.au
- ⇒ **Accounts:** accounts@rosehill.org.au
- ⇒ **Host:** host@rosehill.org.au



A C36 hauled 350 ton goods train entering the 1500 foot Ardglenn Tunnel on the Main North railway line close to the New England Highway on the North West Slopes region of NSW.

Excessive temperatures in the Cab travelling 10mph up the 1in 40 grade, required the "Helper" loco to be attached to the rear of the train at Murrumbidgee.

I wanted to replicate this "Rear End Banking" operation, done with a Second Operator, on my DCC Main North layout. *Marcus Ammann*



RAILS @ ROSEHILL

Australasian Region National Convention 2023
National Model Railroad Association

29 September - 2 October 2023

6029 is part of the collection managed by Transport Heritage NSW

Clinic Call

Have you been waiting to be asked to run a clinic at **Rails@Rosehill**?

You are now officially asked!

How would you guide a fellow modeller when asked: "how do I get my projects from under the bench to finished and sitting on top of the bench?" Or: "how do I decide the right sized layout (a.k.a. is my planned layout manageable)?"

Maybe: "Where do I start with getting the design issues off my layout?"

Is your expertise with: 'Evergreen', 'selecting the right sound files', 'using Arduino to run auxiliary equipment'. What about sharing the guidance and expertise you have with kit bashing and scratch building? Are signals and LED's your thing?

Standards | Decals | Tools | Protohottle | JMRI Ops | Landscaping | Freemo | LCC | Weathering
Prototype Buildings | Remote Operations | NSWGR | Signalling | Emerging Technologies
Battery Operated Locos | Using Auxiliary Decoders | Servos | Online Tools and Resources
Building to Someone else's Expectations (there are no rules)! | Strategies for Selecting Industries

Please email your expression of interest to run a clinic to: rails@rosehill.org.au

Program Overview

Friday:

- Layout Tours
- Welcome to Rosehill Canapés

Saturday:

- Formal Opening
- Opening Plenary / Guest Speaker
- Clinics
 - Consult with an MMR
 - Partners Program
Own program and cost
- Trade stands and hands-on layouts
- Convention Dinner—separately ticketed

Sunday:

- Welcome to Sunday
- Opening Plenary / Guest Speaker
- Clinics
 - Grandkids morning
 - Partners Program
Own program and cost
- Trade stands and hands-on layouts
- Convention Close—all welcome

Monday:

- Layout Tours

Further program details in the next newsletter

Accommodation at Rydges Parramatta

Our Convention venue is the ideal place to stay while at **Rails@Rosehill**. Staying onsite has its benefits with everything just a lift ride away!

To assist you with your accommodation choice, we hope that the following will be of benefit in your decision regarding where to stay.

Rydges Parramatta have offered Convention guests two room types: 'Superior Queen Room' and 'King Room' (the 'king room' bed can be split into two beds making a 'Twin Room' to share).

The costs per night, on a 'room only basis', are:

- ◆ Friday and Saturday, per night: \$240.00
- ◆ Sunday and Monday, per night: \$180.00

Complimentary parking onsite, subject to availability

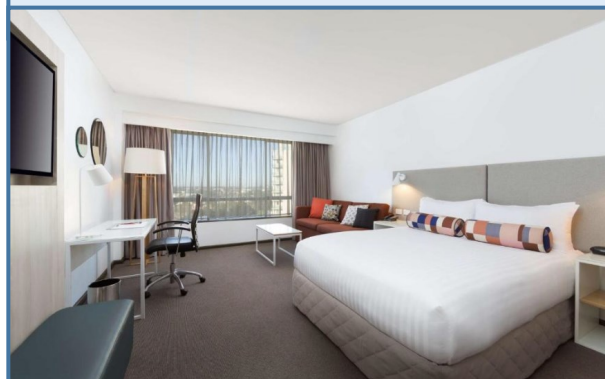
Onsite facilities include: free WiFi, Restaurant, Bar, ATM, laundry, room service. Facilities are available for disabled or mobility impaired guests.

Meals included in your **Rails@Rosehill** Convention Registration (excludes Partner's Program Registrations) are morning tea, lunch, afternoon tea on both Saturday and Sunday.

The optional Convention Dinner on Saturday evening is at Rydges Parramatta and is an 'extra-fare' event, booked and paid for when registering online for **Rails@Rosehill** Convention.

Accommodation bookings are made direct with the Hotel via [this link](#). The link includes special pricing just for our event! No 'I have a code' required.

More places to stay on the next page...



On Line Resources:

In this hobby there are many exceptional online resources both here within our Region as well as internationally. These are found as podcasts, websites, YouTube channels, blogs, chats, etc. *For example:* Luke Towan, Will James Railways, Around The Layout, Second Section, TCD Crossing Gate, Modelers Life, NMRAX, DCC Guy, Chadwick Model Railways, Toms Trains and Things.

The questions is: what other resources have you found of value and would *highly recommend* to the members in our Region?

Dispatch an email to: Rails@Rosehill.org.au



*This resource list will be published at **Rails@Rosehill***



RAILS @ ROSEHILL

Australasian Region National Convention 2023
National Model Railroad Association

29 September - 2 October 2023

6029 is part of the collection managed by Transport Heritage NSW

More Places to Stay

There are other places you could choose to stay during **Rails@Rosehill**. You will need to make contact with the hotel or motel to make your own enquiries and bookings. Here is a selection:

Nesuto Parramatta—within 0.1km

Mercure Sydney Parramatta—0.6km

Meriton Suites Parramatta—1.5km

Holiday Inn Parramatta—1.6km

SKYE Hotel Suites Parramatta—2.2km

Novotel Sydney Parramatta—3km

Optionally, check with: www.bookings.com, www.wotif.com, www.hotelscombined.com.au, www.stayz.com.au for these and other options. *Be mindful of the distance and cost to get to and from the Rydges Parramatta when considering your choice of accommodation.*

Contest Information: Contest Chairman: Gerry Hopkins MMR FNMRA

As part of the Convention we hold a **Modelling Contest** that any/all attending members can enter! Click this link to the [Contest Information](#) page on the AR Region Website which explains the options and categories available.

The link above includes an explanation of the contest rules and categories available, with links to explanations of the forms needed to enter a model in the contest.

Have you thought about entering into the **Photography Contest**? This will be judged by someone who has won the contest a few times herself – *Ruth Garbutt*.

The **Rick Shoup Award** is awarded for the Best Model Of An Australasian Prototype. This model can be a loco, rolling stock or structure. The choice is yours!

The **John Baker Award** is awarded for the best Model Of An American Prototype. This model can be a loco, rolling stock or structure. The choice is yours!

Additionally, attaining a point score of 87.5 points, or 70%, entitles the entrant to a **Merit Award** which counts towards the **Master Builder Awards** in the **NMRA Achievement Program**.

Here is the link again: <https://nmra.org.au/contest-information/>

These are some photos of previous entries:



Inside the Traction Power Station



NSW PC1 Station



If you require any information on the Modelling Contest, please email the [Contest Chairman](#), he is happy to assist.





RAILS @ ROSEHILL

Australasian Region National Convention 2023
National Model Railroad Association

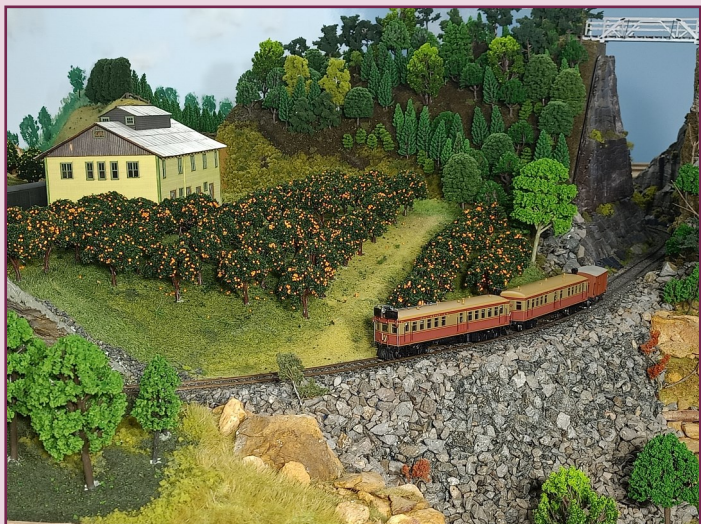
29 September - 2 October 2023

6029 is part of the collection managed by Transport Heritage NSW

Layout Tours

One of the strengths of belonging to the NMRA is the opportunity to visit members' own layout both as part of our regular meetings and casually through private arrangements. Everyone's layout is unique from many aspects and this gives all members the opportunity to talk to the owner about their achievements and challenges. It is a privilege of NMRA membership to have this opportunity.

Rails@Rosehill is offering attendees the opportunity to visit a selection of layouts on the Friday and Monday either side of the weekend. The scenes here are from three of the layouts being prepared for your visit.



"The local tin hare on the Loop Line passes through the deep rail cutting near Hill Top.

The morning train took shoppers to Mittagong and Bowral, returning them in the late afternoon.

Orchards were a feature of the area from first settlement in the 19th Century"

"Rail sleepers are manufactured at Braemar on the southern portion of the Loop Line.

Operation of the plant requires cement dust, reinforcing steel and gravel to be delivered in distinctive wagons.

After manufacture, the sleepers are loaded onto special flat wagons for distribution throughout NSW."



"Rail yards in Gunnedah were a busy place for the delivery and exchange of goods.

At one time Gunnedah was a centre for agricultural inputs to arrive for distribution throughout the Liverpool Plains.

The purpose built freight shed adjacent to the station allowed vans and open wagons to be shunted under cover, unloaded onto a covered platform and reloaded for outward shipment."



More details to come in future newsletters!

Right now, make a note in your diary that layouts will be available for viewing around Greater Sydney, Central Coast, Southern Highlands and the South Coast areas either side of the **Rails@Rosehill** weekend.

